



# Integrating District Systems to Make All Those Partner/Vendor/Research Requests Work for You (a.k.a. Using IRB to manage partners and “asks”)

**Jefferson County Public Schools**

Louisville, Kentucky

**Office of Accountability, Research, and Systems Improvement (ARSI)**

**Dr. Leslie Taylor**, Evaluation Research Specialist & JCPS IRB Chair

**Dr. Dena Dossett**, Chief of ARSI

**Ms. Tamara Lewis**, Executive Administrator of Research



# JCPS Institutional Review Board (IRB)

*Effectively manage partners  
to support and protect*



*Tools and processes*

*Maintain targeted  
focus on priorities*



Big Picture



# What?

## Linking District Operational Areas

### Risk Management

Protection

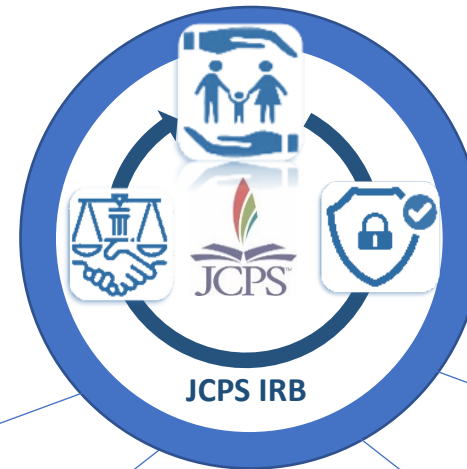
Equitable practices

Data Privacy

Burden to schools

Consent

Instructional time loss



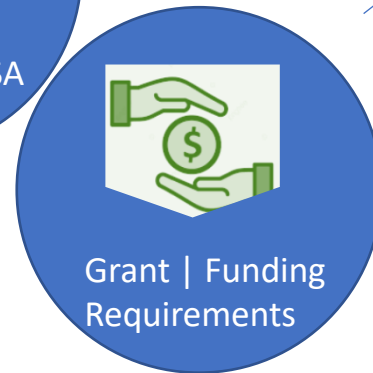
JCPS IRB

Integrated  
Systems  
for  
Partner  
Management



PSC | MOU | DSA  
ORR

General  
Counsel



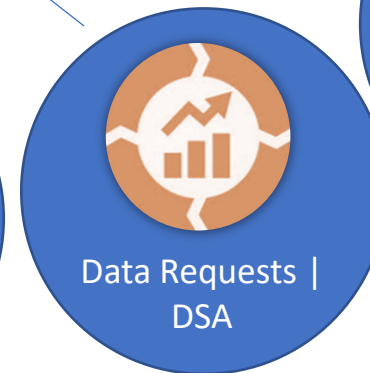
Grant | Funding  
Requirements

Resource  
Development



Equity | Tools

Diversity, Equity,  
Poverty



Data Requests |  
DSA

Research & Systems  
Improvement



Digital Resources |  
DPA

IT<sup>3</sup>



Align  
&  
Focus

# Why link?

## Age Old Question

What are your key priorities and how will you meet them?

## Age Old Result

Good movement/ideas, partial implementation, and...

Coupled Impact

- Strategy 1: District departments lean into and move forward in their areas of expertise.
  - ✓ Refine (sometimes replace) frameworks, initiatives, programs, expectations.

→ Silos of work and conflicting expectations.

- Strategy 2: Get outside help and engage partners. Lots of folks want to work in schools and school districts for many different reasons.
  - ✓ Provide services, PDs, or programs.
  - ✓ Evaluate these services, PDs, or programs.
  - ✓ Conduct practice and intervention studies.

→ Time and resources pulled in many directions, Introduction of risks



# How?

## Increase Selection Alignment

**JCPS IRB 2.0**  
**2019-20**

(before pandemic)

### Ask a Leader

Do you want to do it?



IRB review

- Acceptable methods?
- Which priority?
- Risk scale?
  1. Instructional time lost
  2. Burden to schools

**2020-21 and 2021-22**

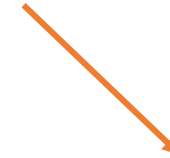
(during pandemic)

### Leader Directive

Why should we do it?  
(only 'essential')



Few to no IRB reviews



Consult with other operational reviews



**2022-23**

(now)

### Engage Systems & Leaders

What critical gap does it fill?



Process Evolution



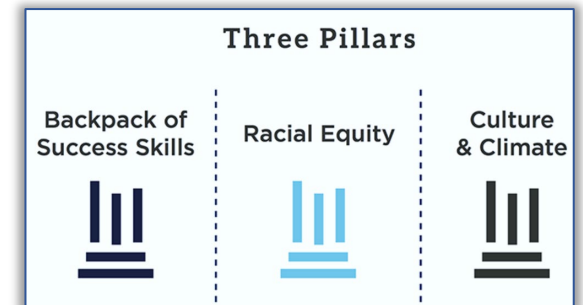
# How? Drive the Agenda

Published on [JCPS IRB](https://www.jcps.kyschools.us/irb) website

JCPS does not accept *unsolicited requests* to conduct research or evaluations with the district or individual schools. Questions about JCPS procedures or data availability can be directed to [jcps.irb@jefferson.kyschools.us](mailto:jcps.irb@jefferson.kyschools.us).

Research and evaluation *activities include* surveys, focus groups, site observations, and requests for identifiable student or staff information or data when requested by university faculty and graduate students (*including JCPS staff to fulfill university degree requirements* for coursework, dissertations, or capstones) and by vendor/community partner work associated with grants or contracts.

The JCPS Institutional Review Board (IRB) only reviews external requests initiated by JCPS leadership as part of our established Research Practice Partnerships (RPP) and yearly research agenda to *directly align with current needs*.

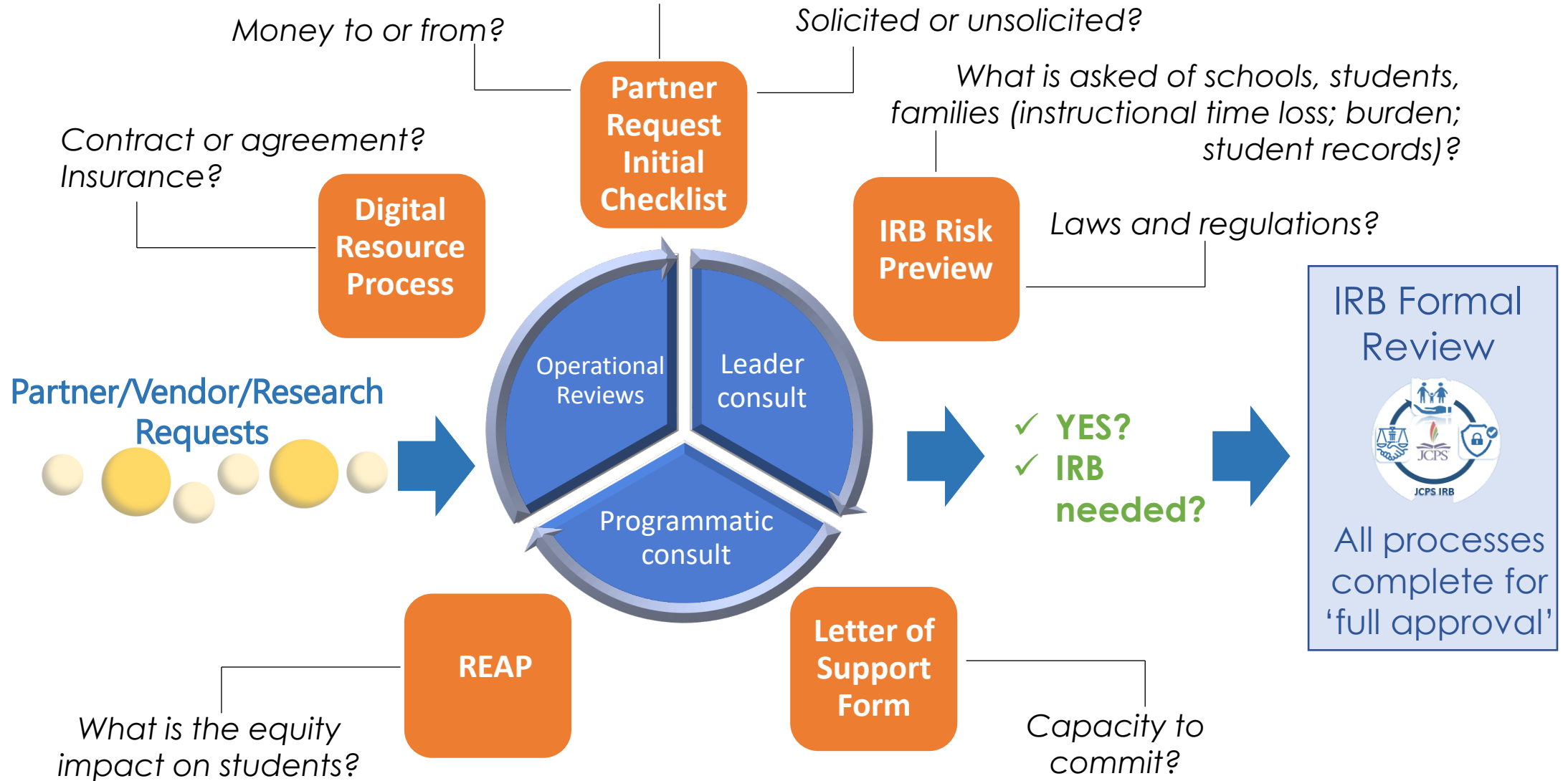


Clear  
Messaging



# How? Integrate Business Rules/Procedures for Partners

*What critical gap does it fill?*



Critical Systems Processes & Tools

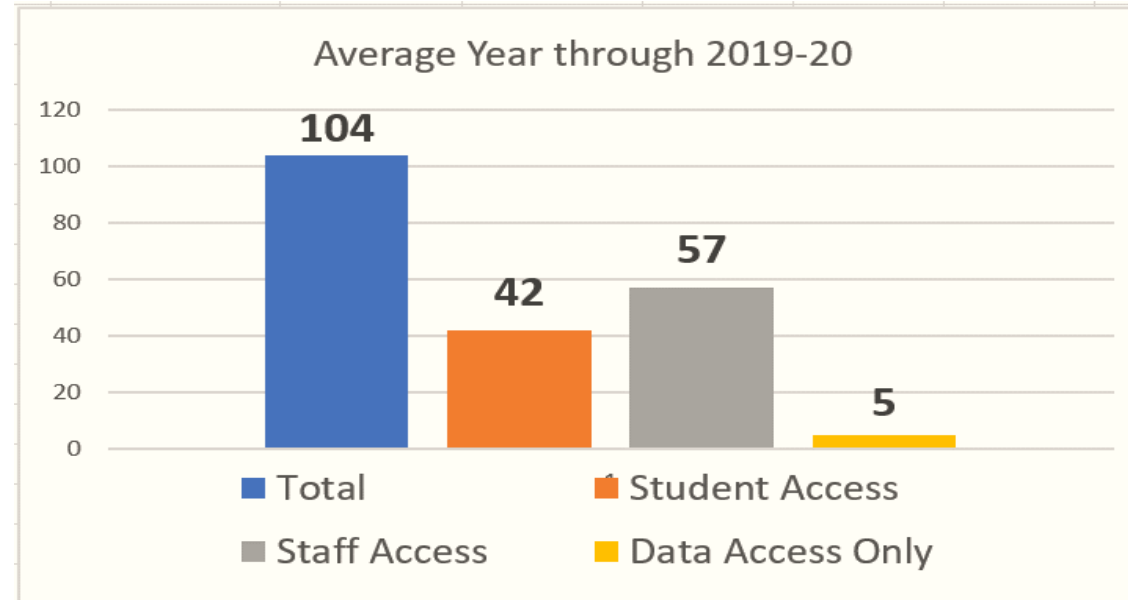


# Where we were with IRB requests

- Some averages

**88%**

In-school time requests



**96%**

Not related to school/district priorities

**87%**

Survey and/or interview

**80%**

Unsolicited requests

**45 min**

Average time involved for students

*“It will only take 10-15 minutes.”  
– said by most researchers*

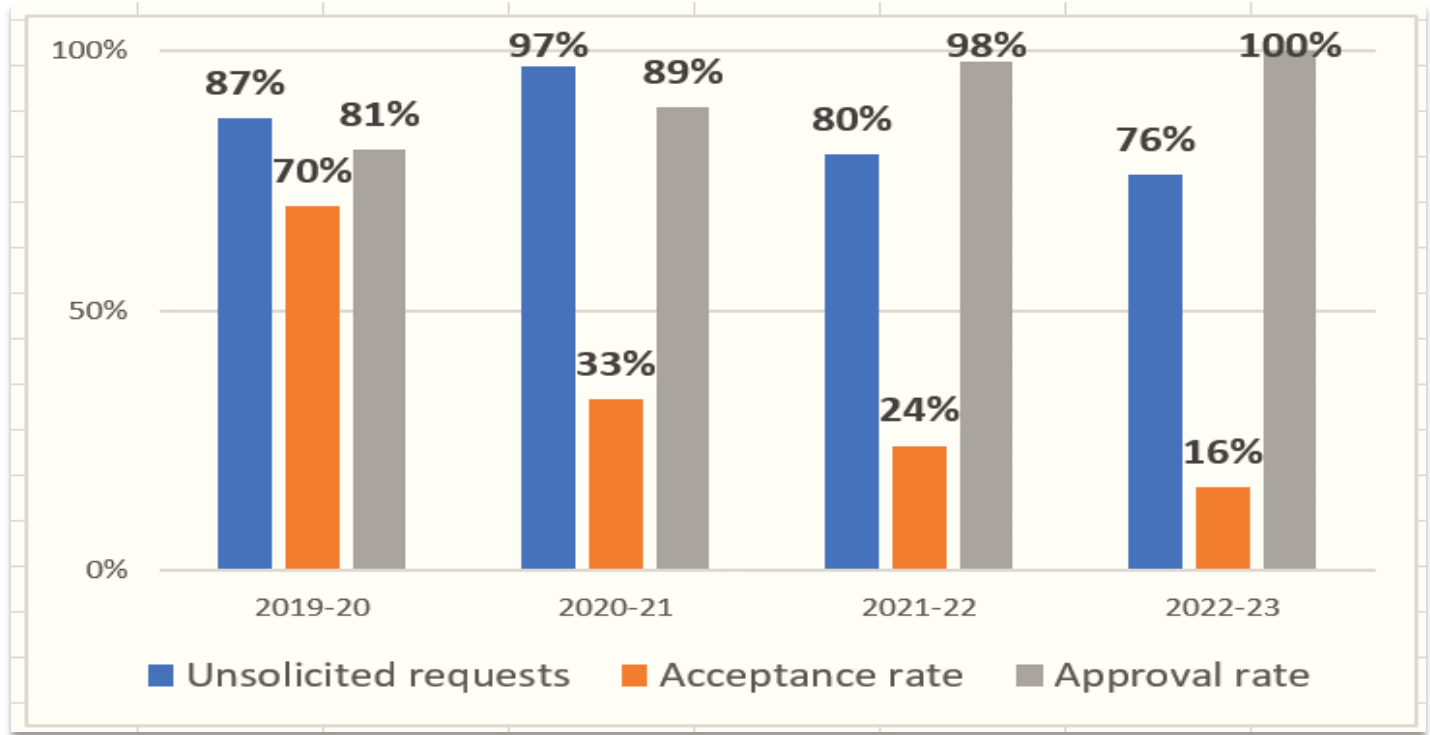
- Working with regional universities on district priorities, intentional partnerships, and programmatic expectations.





# Where we are now with IRB requests

Total Inquiries → **2019-20** 87 | **2020-21** 24 | **2021-22** 43 | **2022-23** 31



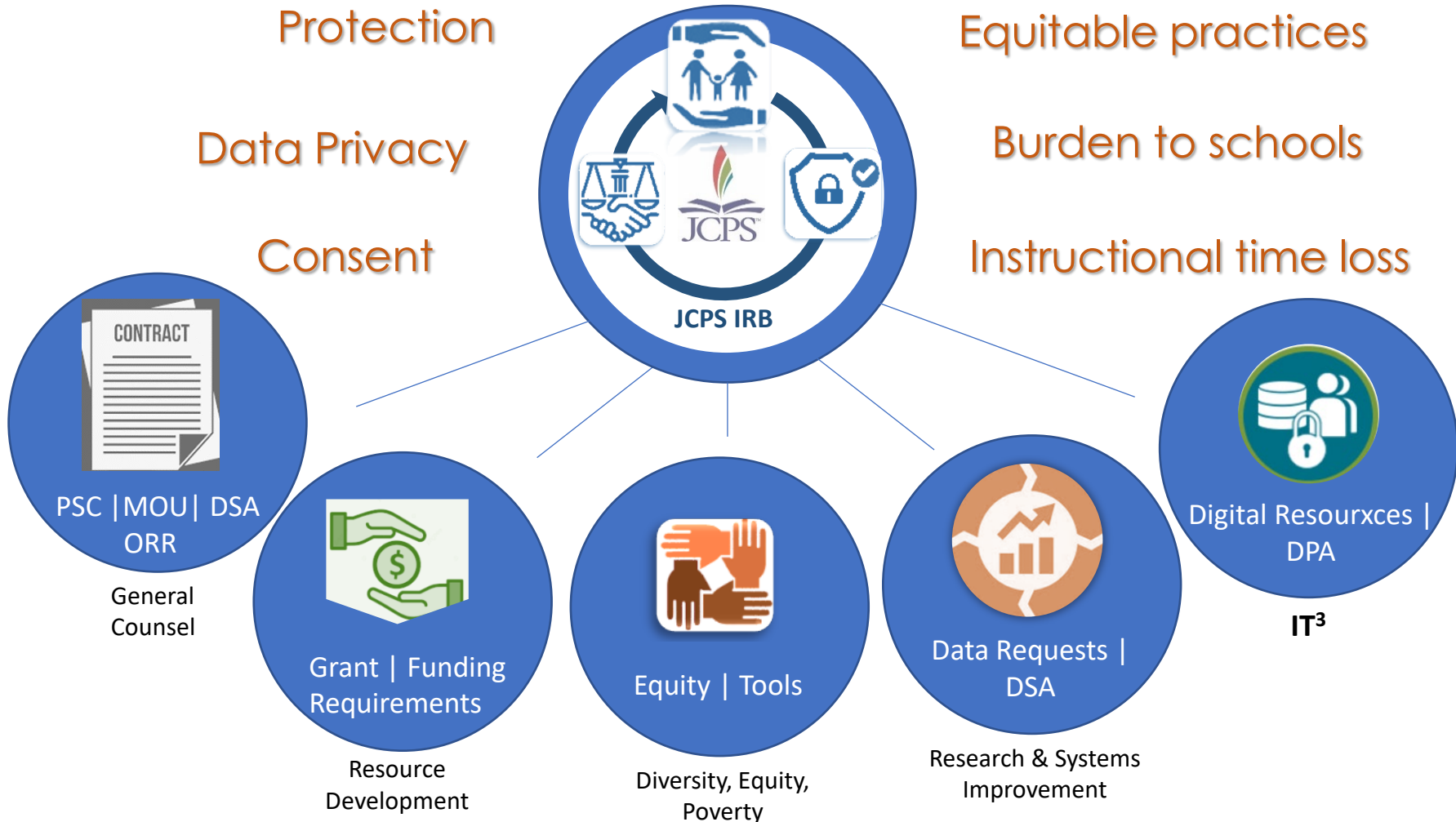
Metric	2019-20	2020-21	2021-22	2022-23	Notes
Total In-School Time	72%	10%	5%	2%	
Total Instructional Time	450,000	12,000	2250	0	] across kids and schools
Total Instructional Time	9,375	800	500	0	

Impact on Schools & District



# Questions?

## Risk Management



Integrated Systems for Partner Management